

Sensors & Accessories

Wind Sensors



The Vector A100 Anemometer

The A100 Anemometer has a 3 cup rotor running a shaft, and is available as either a passive version using a magnetically actuated switch or an active version using a chopped optical beam. Both versions provide pulse signals proportional to the wind speed being monitored. A MEASNET calibration service is also available.



The Vector Wind Vane

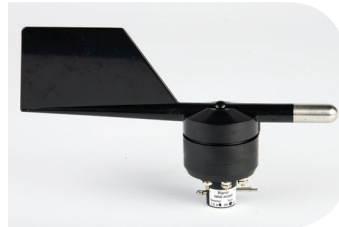
Incorporating a precision wire-wound potentiometer enabling wind direction to be accurately observed. Marine and anti-icing heat options are available on request. The instrument geometry meets IEA standards.

Nexgen can offer a complete range of integrated products incorporating the latest in monitoring equipment, data logging and sensor options. We have a wide range of different sensors available to suit your specific requirements, which can be combined into a complete system to give you everything you need to monitor the wind.



NRG #40C Anemometer

Manufactured in a special robust plastic, this is a simple yet rugged performer. Cup rotation produces an AC sine wave voltage, with frequency proportional to wind speed. The #40C comes with a calibration certificate that is traceable to NIST standards.



NRG #200P Wind Vane

This competitively priced wind vane uses a potentiometer located inside the main body which produces a resistance in proportion to the wind direction.

Rainfall



The RM Young 52203

This high quality rainfall measurement sensor consists of a large collection area (200cm²) and two tipping buckets with a switch. The sensor is designed to be self-cleaning, has levelling screws built in and is available with or without a heater. WMO standard resolution of 0.1mm per switch actuation.

Temperature & Pressure



The Setra Pressure Sensor

A rugged design, high accuracy and a low power consumption, all combine to make this an effective pressure sensor.



The Vaisala HMP155 temperature/ Humidity Sensor

This sensor provides reliable humidity and temperature measurements.

Temperature sensors are available for the Kintech and Campbell loggers, call for further information.

Booms & Arms



Booms

To meet the growing range of anemometer requirements and proliferation of new standards for sensor booms, Nexgen has created the ideal flexible solution.

Nexgen manufacture three 'standard' side booms: manufactured from 304BP Stainless Steel and designed to meet the IEC guidelines (6-1400-12-1).

We can also supply a 'Top Boom', which is designed to be mounted at the top of the Mast, with an incorporated lightning rod.



Sensor Arms

The separation distance between your boom and sensor is important to avoid significant flow disturbance. Nexgen manufacture sensor arms suitable for different sensors with a range of heights, made completely from 304BP Stainless Steel.

Lightning Kits & Aviation Lights



Aluminium Lightning Protection Kits

Designed to help to protect sensors and loggers from lightning strikes, this protection kit conducts the energy down the length of the mast to the ground. The kit contains a lightning spike, grounding rod and aluminium wire to fit the size of your mast, and comes complete with a ground joining length of copper tape and all the necessary connectors and mast clips. The kit is designed to meet, or exceed BS 6651.



32 Candela Low Intensity Obstruction Light

Based on LED technology, extremely reliable with a long lifetime and very low power consumption.